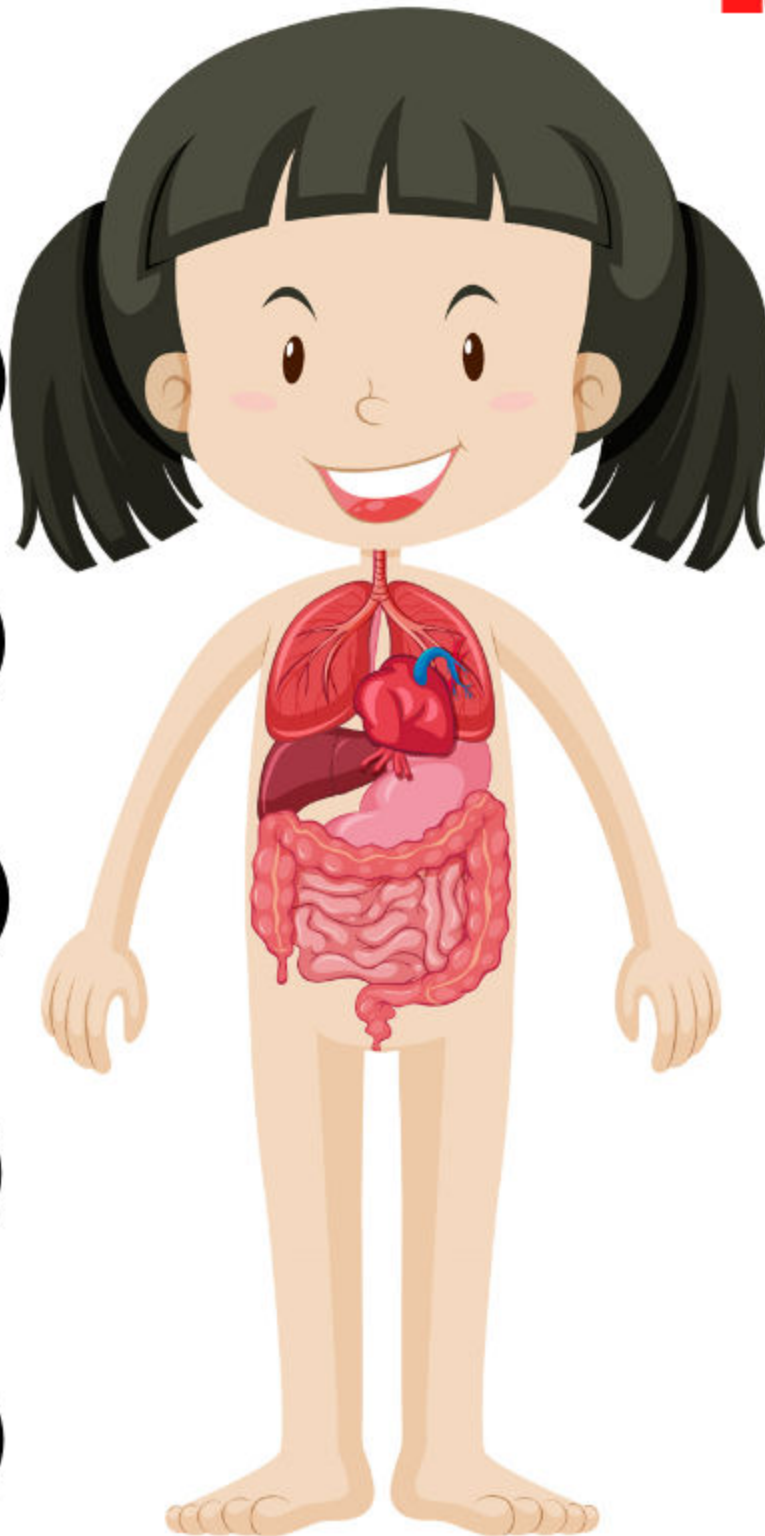


## Digestive system VS Respiratory system

### Digestive system

### Respiratory system

Five empty rounded rectangular boxes for labeling the Digestive system.



Five empty rounded rectangular boxes for labeling the Respiratory system.

write each organ in the correct system where it belongs to.

Stomach-Lungs-long intestine-trachea- alveoli-  
esophagus-small intestine-nasal cavity-mouth  
bronchi.